

Ehime Children's Playground

Children's Center Park Guide



Mascot Character

Koshiro

Fureai no mori Zone

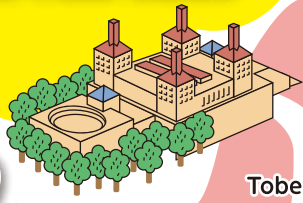
- 16 Forest rest area
- 17 Bio tope
- 18 Ehime Prefecture Experience-Based Learning Center for Ecology (Ehime Eco House)



Cautions for Visitors



No Pets No Smoking No Bringing in Alcohol



Tobe Gate

Tobe Parking Lot

Activity Zone

Activity Zone

- 12 Adventure Station Four-wheel Buggies
- 13 Ladybug Monorail
- 14 Summit rest area
- 15 Bob-sled



Creative Hills Zone

- 9 Flower Hill
- 10 Creative Studio (Woodwork and Pottery)
- 11 Herb Garden



8 Restaurant | Rivage



Opening Hours
10:00 a.m. to 4:30 p.m.
(last orders 4:00 p.m.)
*Times are subject to change due to events and so forth. Thank you for your understanding.

Activity Zone -NEXT-

- 2 Bouncy Domes
- 3 Lawn Area
- 4 Stag Beetle Stage
- 5 TOBEMORI ZIPLINE
- 6 KOSHIRO ADVENTURE
- 7 Boat Dock



Activity Zone -NEXT-

Kids Town Zone

- 1 Ai-Ai Kids Castle



Fureai no mori Zone

Kids Town Zone

Matsuyama Parking Lot

- Park Information
- Restroom
- Accessible Restroom
- Public Telephone
- Coin Lockers
- Parking Lot
- Bicycle Parking
- City Bus Stop
- Taxi Rank

Road Train Stop

Koshiro Cart Stop
(No access on foot)

Koshiro Bus Stop

Matsuyama Gate

Tobe Zoo Tiger Paddock
Ziphouse

Creative Hills Zone

Activity Zone -NEXT-

Kids Town Zone

Matsuyama Parking Lot

- Park Information
- Restroom
- Accessible Restroom
- Public Telephone
- Coin Lockers
- Parking Lot
- Bicycle Parking
- City Bus Stop
- Taxi Rank

Road Train Stop

Koshiro Cart Stop
(No access on foot)

Koshiro Bus Stop

Matsuyama Gate

Indoor Play Ai-Ai Kids Castle

The Ai-Ai Kids Castle, designed to look like a Western castle, is our main attraction! It focuses on themes of looking, gathering together, and creating. The entire castle is one big play area, with indoor equipment, a maze, and opportunities for handicrafts, cooking, and experiencing digital art. There's also a corner for consultations on parenting.

1st Floor



■ Park Information

If you need help with anything, start here! If you've been separated from a party member, lost something, need to ask about events, or want to borrow equipment, golf gear, or a baby buggy, drop by anytime. The zipline reception is right next door.

2nd Floor



■ Mikyan Digital Art Museum
Miracle Egg Spring: See your drawings come to life from an egg!



■ Kids Tower

You'll find big indoor play equipment at the top of the Ai-Ai Kids Castle tower!

■ Toddler Corner
For children up to the age of five.

■ Library Corner
Everything from comics to specialist texts. Relax and read.

■ Consultation Corner ■ Infant Nursing Room

Chat about all sorts of parenting topics.

Diapers can be changed in the restroom facilities.



■ Free Space Including retail of snacks and beverages. Take a break!

■ Music Room

Enjoy playing the piano, marimba, and more!

3rd Floor

■ Cooking Room

Try some cooking - perhaps for the first time!



■ Multi-Purpose Hall

Events are held here, and there are tricycles and hula-hoops to play with!

■ Workshop

The items crafted change monthly, allowing kids to come into contact with all sorts of materials and tools.

10 Creative Studio

Enjoy woodworking and pottery! Experience the fun of making something all your own! Items crafted change every month.

■ Woodwork



Get your hands on fret saws and hammers!

■ Pottery



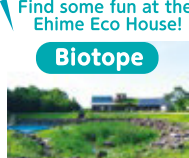
Shape the clay and make your own masterpiece!

Ehime Prefecture Experience-Based Learning Center for Ecology 18

(Ehime Eco House)

Find some fun at the Ehime Eco House!

■ Biotope



Outdoor Play

● Holders of a physical disability certificate or treatment certificate may present it for exemption from payment.
● Elderly persons (65 or older) should present a form of ID that confirms their age to allow for a discount.



Ladybug Monorail 13

A ladybug-shaped monorail that allows you to fly through the skies!

Charge (single use) [two passengers]
[length 400 meters, around five minutes]

- Elementary / junior high students **100yen**
- Infants **FREE**
- Adult (high school student and older) **300yen**
- Elderly person (65 or older) **100yen**
(Upon presentation of photo ID)

★ Conditions for Use

- Young children may not ride without an adult.
- Baby buggies may be put onboard.
- We have baby slings that can be borrowed.
- Charges must be paid separately for going down and coming up.



Bob-sled 15

Feel the wind as you descend at high speed!

Charge (single use) [two passengers]
[length 360 meters x two courses]

- Elementary / junior high students **100yen**
- Infants **FREE**
- Adult (high school student and older) **300yen**
- Elderly person (65 or older) **100yen**
(Upon presentation of photo ID)

★ Conditions for Use

- Children who are in second grade in elementary school or younger or who are smaller than 120 centimeters in height must always ride accompanied by an adult.
- Children may ride alone from elementary school third grade or older if they are over 120 centimeters in height.
- Cancelled in the event of rain.



Road Train

A train that can carry you around the park!

Departs every 30 minutes.
Charge (single use, for a maximum of one lap)
(one lap is around two kilometers and takes around 30 minutes)

- Elementary / junior high students **100yen**
- Infants **FREE**
- Adult (high school student and older) **300yen**
- Elderly person (65 or older) **100yen**
(Upon presentation of photo ID)

▲ In front of Ai-Ai Kids Castle

▶ In front of Stag Beetle Stage

◀ In front of Creative Studio

◀ In front of Tobe Parking Lot

▶ In front of Forest rest area

▶ In front of Matsuyama Parking Lot

★ Conditions for Use

- Young children should ride with an adult.
- Up to four young children may ride per adult.



Boat 7

Relax while skimming over the water!

Charge (single use) [three-person / four-person]
[one lap takes 30 minutes]

- One lap **500yen** There are three-person and four-person boats available.

★ Conditions for Use

- Children of elementary school third grade or younger must always ride accompanied by one adult per child.
- Children may ride alone from elementary school fourth grade and older.



Four-wheel buggies 12

Take a ride on a cool buggy!

Charge (single use) [length 270 meters]

- Junior high school student **200yen**
- Adult (high school student and older) **500yen**
- Elderly person (65 or older) **200yen**
(Upon presentation of photo ID)

Note: You will first receive a ten-minute tutorial, and then may ride for ten minutes.

★ Conditions for Use

- Children may ride alone from junior high school age but not two together.
- You will be required to wear a helmet, protectors, gloves, and knee pads, use of which is included in the price.

TOBEMORI ZIPLINE

Fly from Ehime Kids Castle over the lake to Tobe Zoo! A total round trip of 730 meters, making it one of the longest ziplines in Shikoku!

Hours of operation 10:00 a.m. to 4:00 p.m.
(closed on Mondays / year-end period)

Conditions for Use

- Age Elementary school fourth grade or older (high school students and younger require consent of an adult)
- Body type Must be able to safely wear the harness (height of 120 centimeters or taller)
- Weight At least 25 kilograms (with a total riding weight of less than 110 kilograms)

Charge

- Elementary school fourth grade - **1,400yen**
Junior high students
- High school students / **1,500yen**
Those aged 65 or older
- Adult **3,200yen**

Note: Includes entry to Tobe Zoo and use of the Koshiro Cart.

Bookings can be made from the Ehime Kids Castle website

○ The Koshiro Cart allows access all the way to the Summit Fortress.



Negotiate the course and head for the goal!

Charge (single use)

- Elementary / junior high students **300yen**
- Infants **FREE**
- Adult (high school student and older) **500yen**
- Elderly person (65 or older) **300yen**
(Upon presentation of photo ID)

★ Conditions for Use

- May be used by children from three years of age.
- Children of elementary school second grade or younger must always ride accompanied by one adult per child.
- Cancelled in the event of rain.



Koshiro Bus

Sundays
Holidays
Only

Just like a real city bus!

Charge (single use)

- Elementary / junior high students from **100yen**
- Infants **FREE**
- Adult (high school student and older) from **200yen**
- Elderly person (65 or older) from **100yen**
(Upon presentation of photo ID)

1 In front of Ai-Ai Kids Castle

2 In front of Matsuyama Parking Lot

3 In front of Eco House

4 In front of Forest Square

5 Summit rest area

★ Conditions for Use

- Young children should ride with an adult.

■ Ride Operating Hours

Normal Times	9:30 a.m. to 4:30 p.m.
Summer (including summer holiday)	9:30 a.m. to 5:30 p.m.
Winter (December - February)	10:00 a.m. to 4:00 p.m. 4:30 p.m. on Saturdays, Sundays, and holidays

Note: Times are subject to change due to the weather and crowding conditions.

Note: The above closing times are also the departure times of the final Road Train of the day (from in front of the Ai-Ai Kids Castle).

Restaurant I ♥ RIVAGE 8

Restaurant's Special Curry Senzanki Set Meal (rice, miso soup, salad)

Tantan Noodles

Yakiniku Set Meal Hamburger Steak Lunch (rice, seaweed soup, salad)

Kids Set

Mini Udon Noodles Mini Fried Rice Mini Curry Rice

Subject to change